

## Supplementary Materials

### **Adaptability of prognostic prediction models for patients with acute coronary syndrome during the COVID-19 pandemic**

#### **Contents**

**Supplementary Table 1. Institutions participating in the study.**

**Supplementary Table 2. Net reclassification improvement (NRI) of the KOTOMI and the GRACE for patient data of each ACS group.**

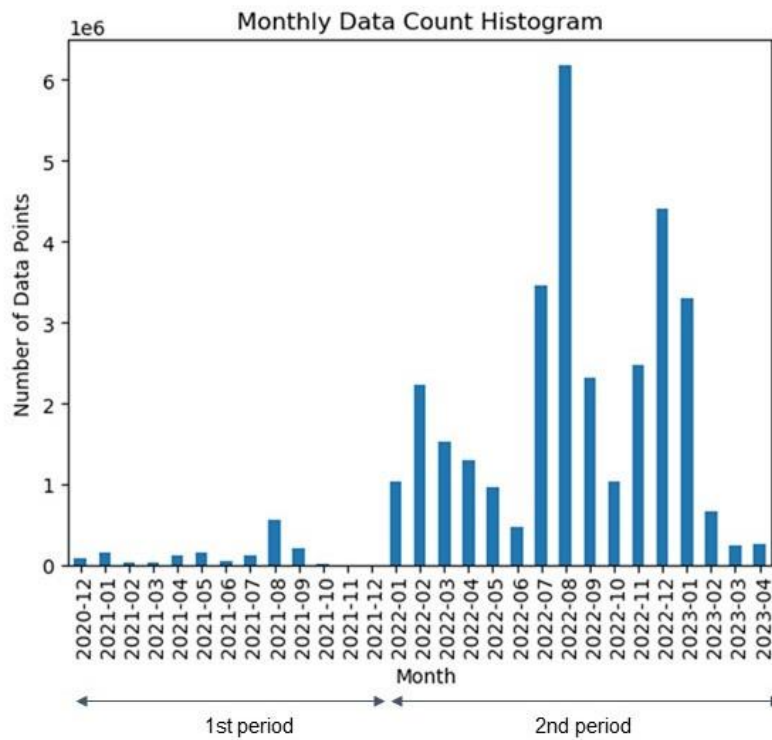
**Supplementary Figure 1. Monthly cases of COVID-19 between 2020 December and 2023 April in Japan.**

**Supplementary Table 1. Institutions participating in the study.**

<b>Institution's name</b>
Takahashi Hospital
Kyoto Okamoto Memorial Hospital
Kyoto Chubu Medical Center
Omihachiman Community Medical Center
Japanese Red Cross Kyoto Daiichi Hospital
Koseikai Takeda Hospital
Fukuchiyama City Hospital
Japan Community Health care Organization Kobe Central Hospital
Saiseikai Shiga Hospital
Japanese Red Cross Kyoto Daini Hospital
Kansai Electric Power Hospital
Maizuru Kyosai Hospital
Akashi City Hospital
Kyoto City Hospital
Kyoto Tanabe Central Hospital
Kyoto Saiseikai Hospital
Matsushita Memorial Hospital
University Hospital, Kyoto Prefectural University of Medicine
Kyoto Kizugawa Hospital
Yasaka Hospital
Rakuwakai Otowa Hospital
Japan Community Health Care Organization Kyoto Kuramaguchi Medical Center
North Medical Center Kyoto Prefectural University of Medicine
Nishijin Hospital
Biwako Ohashi Hospital
Ayabe City Hospital
Otsu City Hospital
Rakusai Newtown Hospital
Rakuwakai Marutamachi Hospital
Kyoto Yamashiro General Medical Center
Takeda Hospital
Osaka General Hospital of West Japan Railway Company

**Supplementary Table 2. Net reclassification improvement (NRI) of the KOTOMI and the GRACE for patient data of each ACS group.**

<b>Phase</b>	<b>STEMI</b>	<b>NSTE-ACS</b>
All	0.13 (95% CI: -0.044-0.31), <i>P</i> Value=0.13	-0.063 (95% CI: -0.38-0.25), <i>P</i> Value=0.69
1st period	0.17 (95% CI: -0.079-0.42), <i>P</i> Value=0.18	0.015 (95% CI: -0.37-0.40), <i>P</i> Value=0.93
2nd period	0.10 (95% CI: -0.15-0.36), <i>P</i> Value=0.41	-0.18 (95% CI: -0.73-0.35), <i>P</i> Value=0.49



**Supplementary Figure 1. Monthly cases of COVID-19 between 2020 December and 2023 April in Japan.** According to the monthly COVID-19 cases in Japan, the pandemic period was divided into two periods with December 2021 as the boundary.