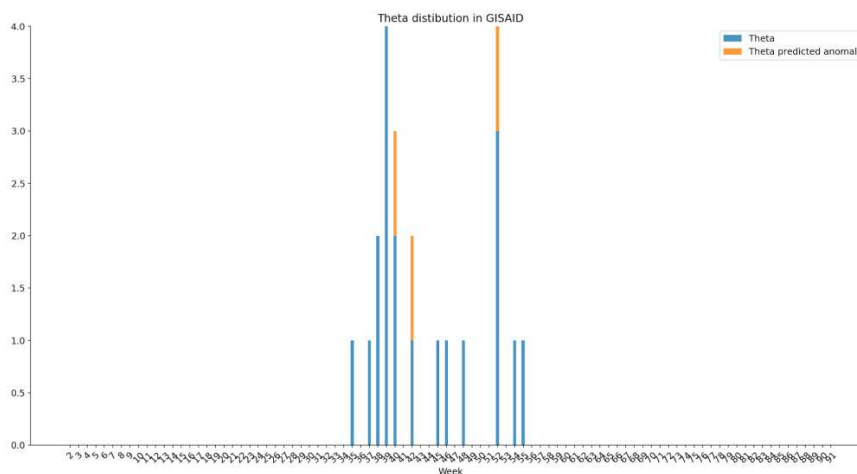
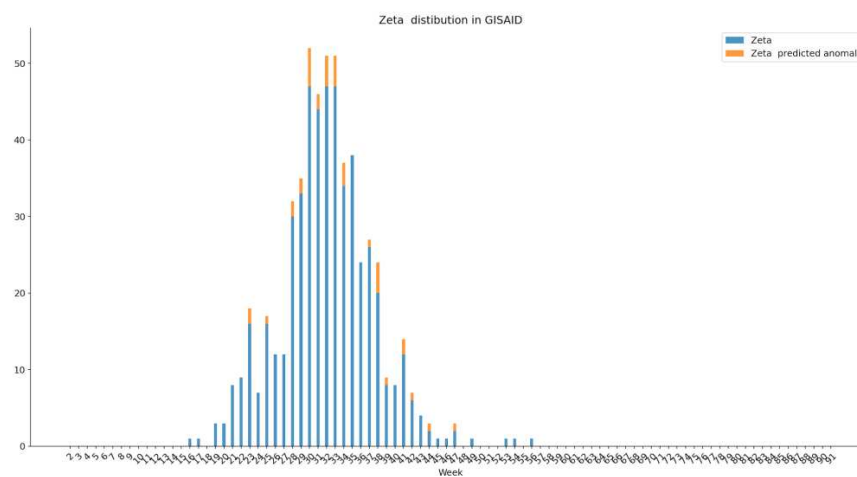
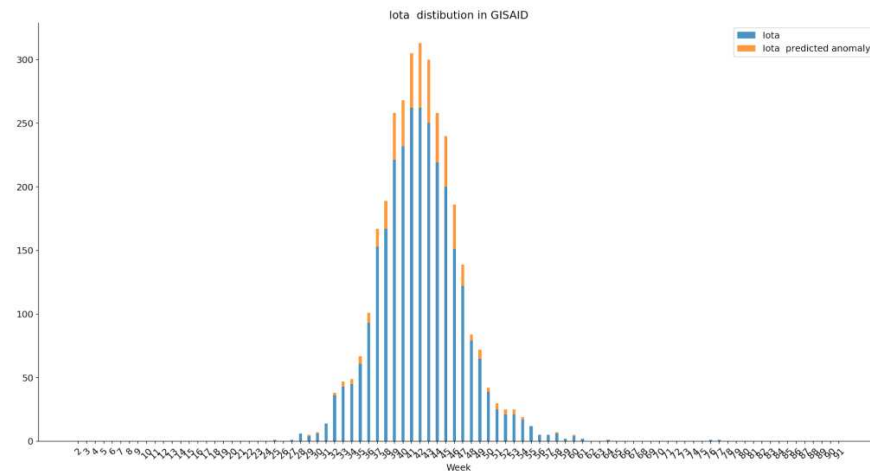
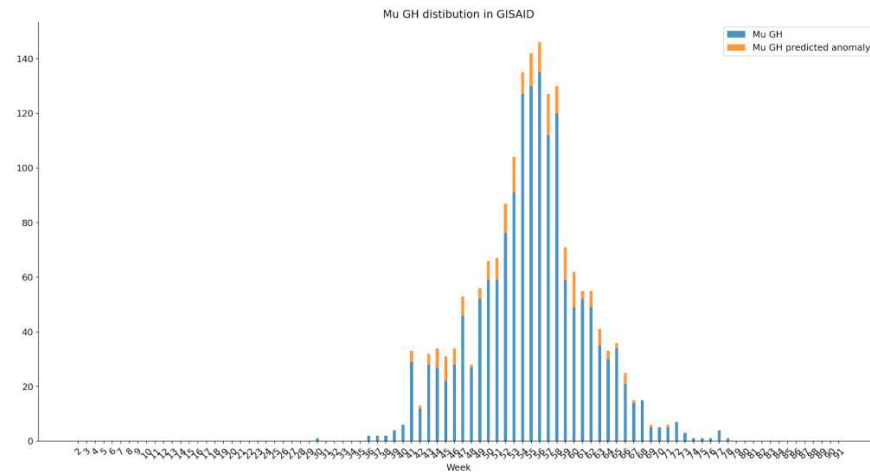
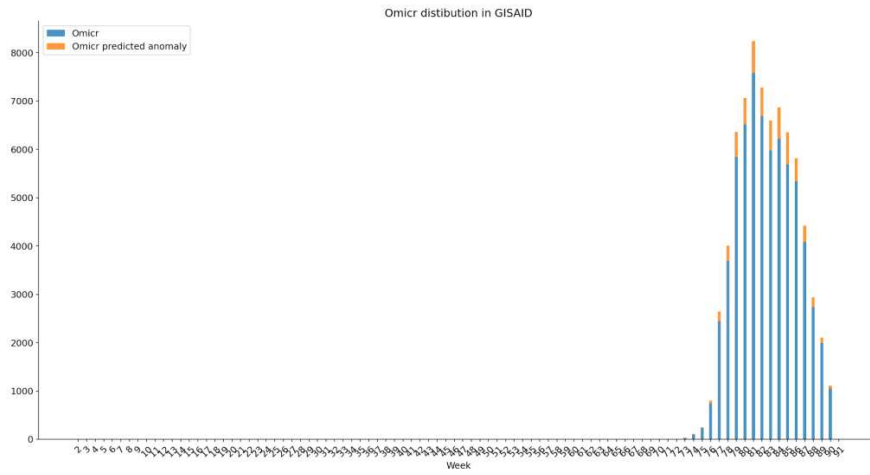
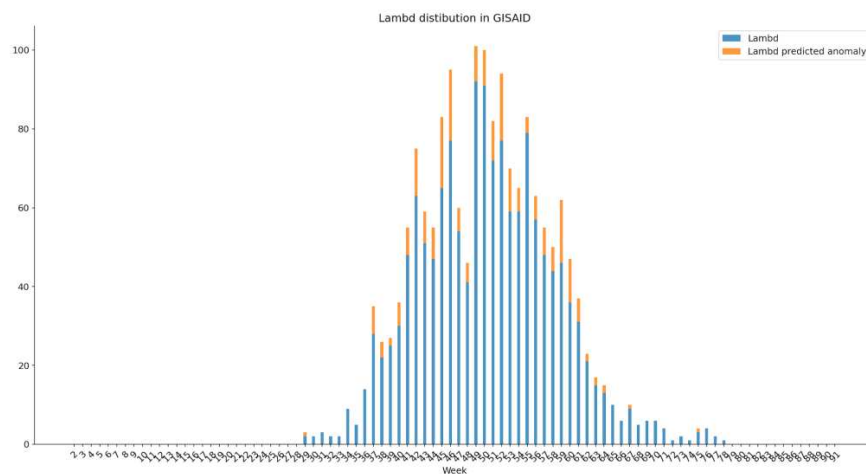
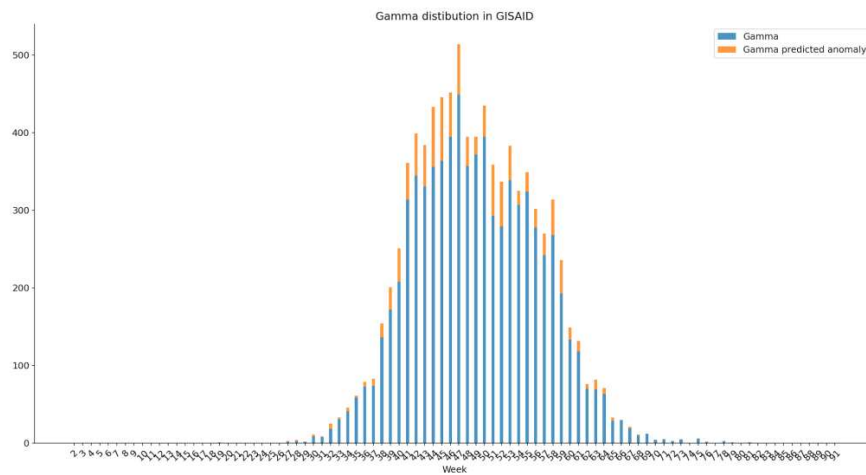
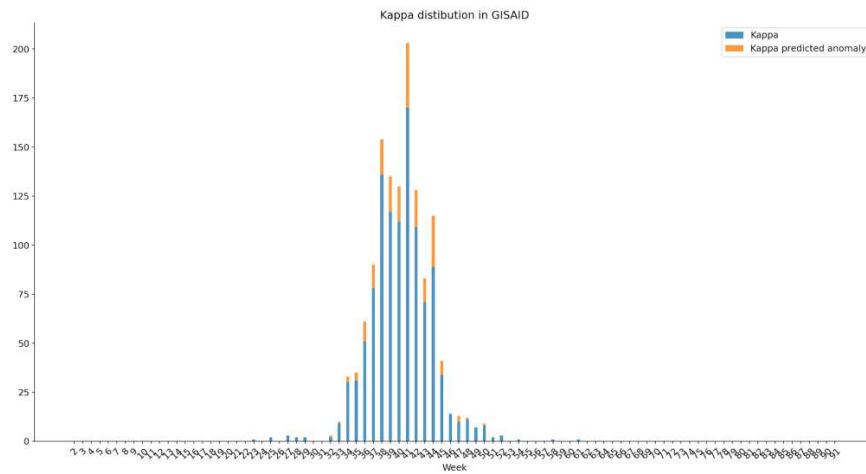


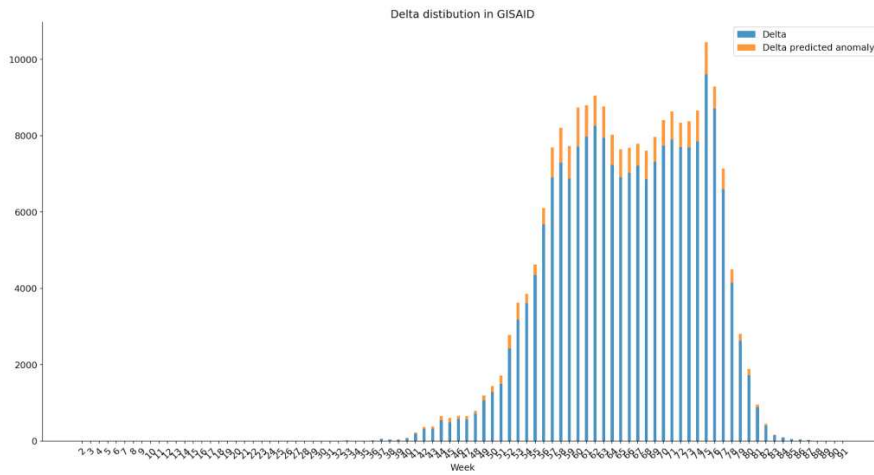
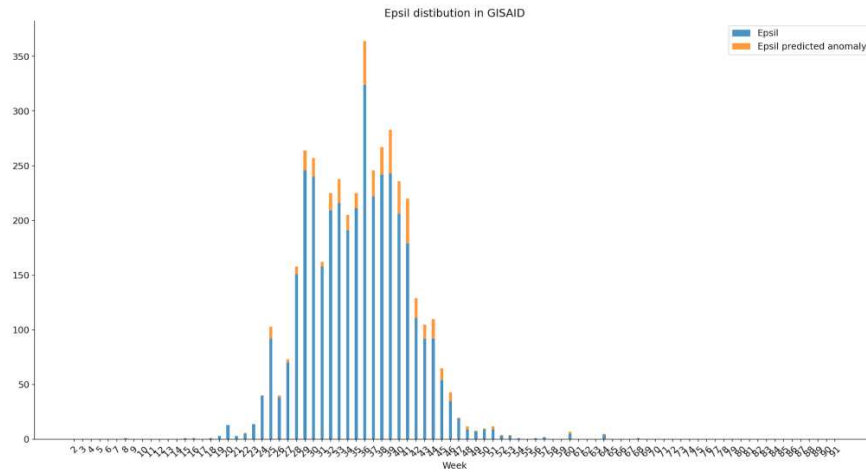
Supplementary material

For each variant type, number of sequences predicted as inlier and number of sequences predicted as outlier.









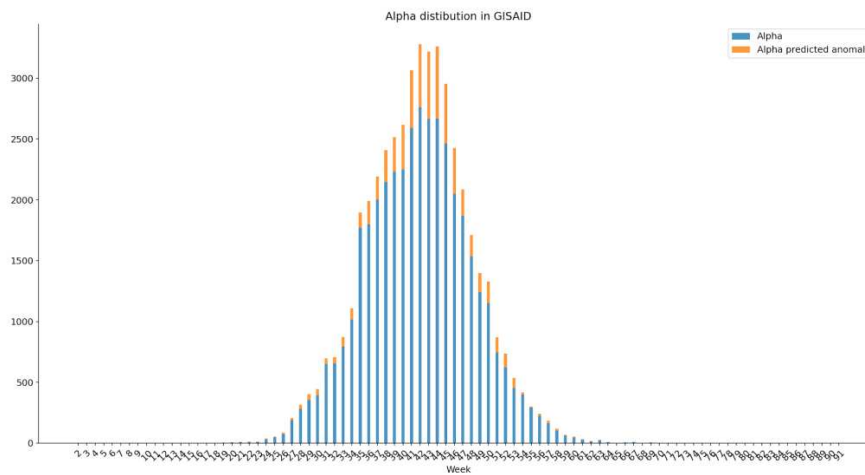
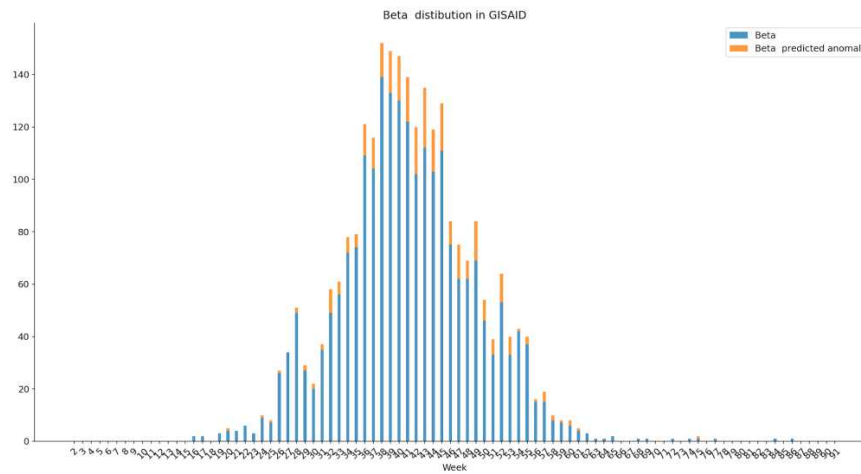


Table S1: Precision of the anomaly detection week by week.

WEEK	Precision
2	0.0
3	0.0
4	0.0
5	0.0

6	0.0
7	0.0
8	0.0
9	0.0
10	0.0
11	0.0
12	0.0
13	0.0
14	0.0
15	0.0
16	0.0
17	0.0
18	0.0
19	0.011
20	0.013
21	0.012
22	0.05
23	0.036
24	0.05

25	0.09
26	0.11
27	0.15
28	0.18
29	0.23
30	0.27
31	0.23
32	0.29
33	0.35
34	0.40
35	0.38
36	0.51
37	0.53
38	0.65
39	0.69
40	0.73
41	0.79
42	0.80
43	0.81

44	0.84
45	0.84
46	0.81
47	0.81
48	0.88
49	0.91
50	0.89
51	0.87
52	0.87
53	0.946
54	0.91
55	0.93
56	0.95
57	0.96
58	0.95
59	0.97
60	0.98
61	0.98
62	0.98

63	0.97
64	0.98
65	0.98
66	0.97
67	0.97
68	0.98
69	0.96
70	0.98
71	0.98
72	0.97
73	0.97
74	0.97
75	0.98
76	0.98
77	0.978
78	0.98
79	0.96
80	0.98
81	0.98

82	0.99
83	0.99
84	0.98
85	0.99
86	0.99
87	0.99
88	1.0
89	0.96
90	1.0